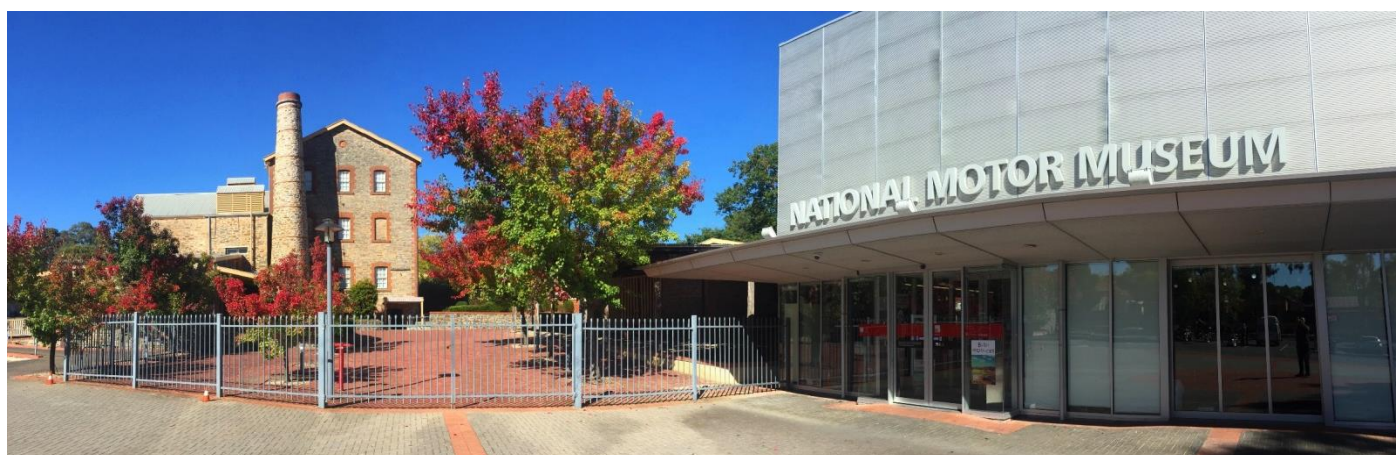




SCHOOL EDUCATION PROGRAMS 2018

The National Motor Museum is a place where students can learn in a unique environment. The beauty of the Adelaide Hills and the stunning grounds of the Museum contribute to the students having a most memorable day. Students can explore the history of motoring in Australia, the people who drove iconic vehicles on epic journeys and the impact motoring history has had on our lifestyles and culture over decades and years.

Through a range of hands-on activities, students will develop skills in historical thinking, teamwork, an understanding of the rich diversity of motor vehicles and the science, technology and engineering behind them. Schools can travel to the Museum OR we can provide a range of education programs onsite at your school.



NATIONAL MOTOR MUSEUM COMES TO YOUR SCHOOL (Incursion)



A practical and economical alternative to visiting the Museum at Birdwood. Museum staff will come to your school bringing a range of intriguing museum objects and relevant education materials. Students will learn about the impact motor vehicles have had on Australian life and explore the rich social history of the people who drove them. Students will become immersed in exciting hands-on learning which encourages critical thinking, exploration and team work.

Current Education Programs



Lego© Works HASS R-3 (90 mins)

Also available at your school as an incursion

The Lego© works Car Factory is a practical educational program that allows students from Reception to year 3 to build a vehicle using Lego©. The program is designed for junior primary students to introduce exploration of the topics and themes on how cars are made and how assembly lines used to work. Each student receives a special badge to acknowledge that they have participated in the Lego© building program at the National Motor Museum.

<http://motor.history.sa.gov.au/resource/legoworks/>

MotorWorks Years 4-9 Design and Technology, HASS (90 mins)

Also available at your school as an incursion



MotorWorks is an interactive and practical educational program that allows students from year level 4 and above to create their own cardboard Model-T Ford. The program has been developed by the National Motor Museum to provide an educational interpretation of the motor vehicle and its impact on society. A video of the history of the vehicle is presented and a construction project introduced to build a Model T Ford. This project develops the student's knowledge of historical vehicles and understanding of the processes involved in the construction of the motor vehicle.

<http://motor.history.sa.gov.au/resource/motorworks/>

The Hawker Vans - Developing Historical Thinking HASS R-7 (90 mins)

Also available at your school as an incursion



The Hawker Vans program examines the role of the Hawker in the early part of the 20th Century selling goods from their vans. Based on the Hawker Vans exhibition at the Museum, students will participate in an inquiry based activity looking at the original Hawker Vans and their contents (for those attending the Museum only). Students handle old items which the Hawkers likely sold and compare them to current day items which they are more familiar with. Students will load their chosen items into four scale model replicas of the 'Harry Mansoor' Hawker Van and simulate travelling to a remote town and selling their goods to the people there. Early migration is also discussed for upper primary.

<http://motor.history.sa.gov.au/resource/developing-historical-thinking/>



Bush Mechanics Claymation using iPads Year 3-9 (90min)

Also available at your school as an incursion

Linking to the Claymation episode of the iconic Bush Mechanics TV series, students will make a short movie using stop motion animation depicting Aboriginal bush mechanic themes and vibrant characters. Student learning: HASS, design and technology, digital technology, Media Arts and ATSI cross curriculum priorities. Hands on learning and great team building!

<http://motor.history.sa.gov.au/resource/bush-mechanics-for-years-6-9/>

OSHC and Holiday Programs



Bring your OSHC and Vacation Care Groups to the National Motor Museum in the School Holidays and experience our popular programs

Rev up your LEGO® building skills for Ramp Racers! Design, build and race your Lego hot rod, dragster or supercar down our track. Also available is our ever popular Scalextric Race Circuit which allows groups of up to six children to test their hand-eye coordination skills and compete with each other in a safe and exciting environment. Students can make a stop motion movies on an iPad

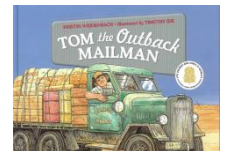
with our Claymation activity. They can create figures from plasticine and make a fun short movie with sound effects.

Education Programs for Term 2



Tom Kruse: The Outback Mailman Years 3 – 7 (also available as a school incursion)

This program explores the work of the legendary Tom Kruse who took the mail to outback stations and towns. Students can come to the Museum to see the restored Leyland Badger truck which Tom used to carry the mail to remote parts of Australia. The award winning children's book by Kristen Weidenbach is a companion resource to this program.



Students will then take part in an exciting re-enactment of his journey from Marree to Birdsville within the picturesque grounds of the Museum in a scale model half size electric powered Leyland Badger truck. Activities will include driving the truck, loading and securing the load, using an old HF radio, writing and posting letters, 'delivering the mailbag to Birdsville', using rope and pulleys to extricate the bogged truck and much more.

[Re]Assembled: Australia's Automotive Manufacturing Journey STEM Education Program



With the doors now closed at the GM Holden Elizabeth Factory, the National Motor Museum has launched '[Re]assembled: A history of Australian automotive manufacturing', a new permanent exhibition and accompanying education program encompassing STEM based learning across primary and secondary.

NATIONAL MOTOR MUSEUM EDUCATION PROGRAMS

Visit the National Motor Museum at Birdwood (excursion)

One education program: \$7:50 per student \$3:00 equity

Two (different) education programs: \$10:00 per student \$6:00 equity

OSHC Holiday Programs \$7:50

Museum comes to your school (incursion)

Cost \$600 (\$450 equity) includes two classes (extra classes \$220) and a choice of two programs:

Motor Works, Lego© Works, Hawker Vans, Claymation with iPads

Tom Kruse - The Outback Mailman (Term 2)

**For more information and to discuss your needs,
call Education Manager: Ian Reed Ph. 85684000**

Website <http://motor.history.sa.gov.au/>

Shannon Street Birdwood, SA 5234

